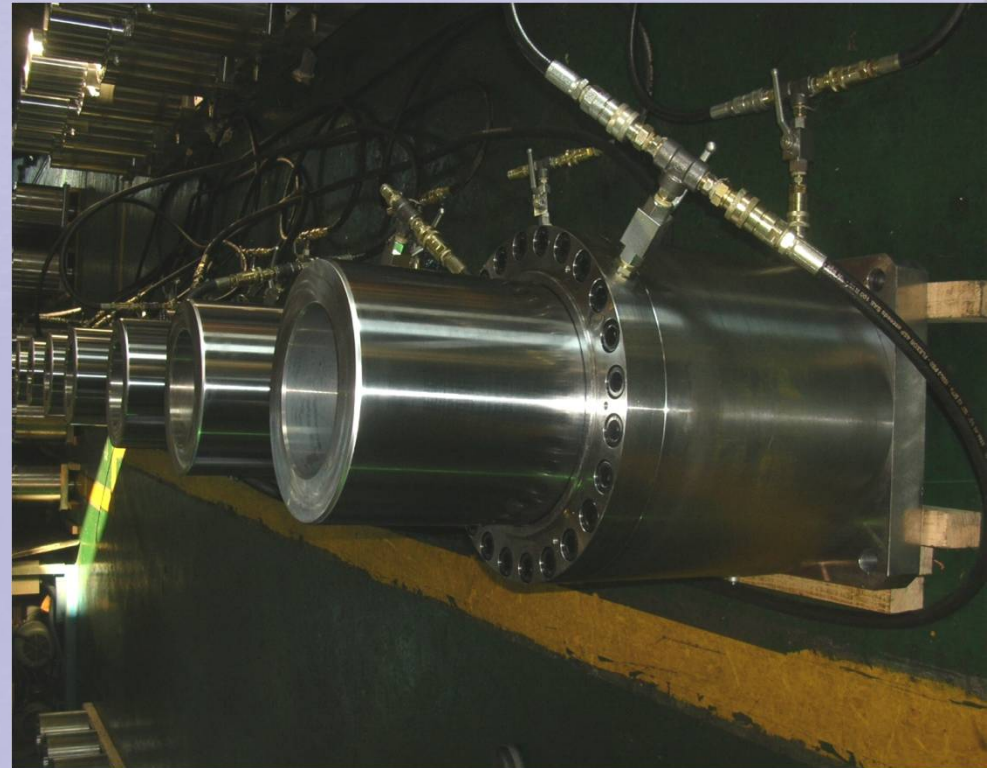
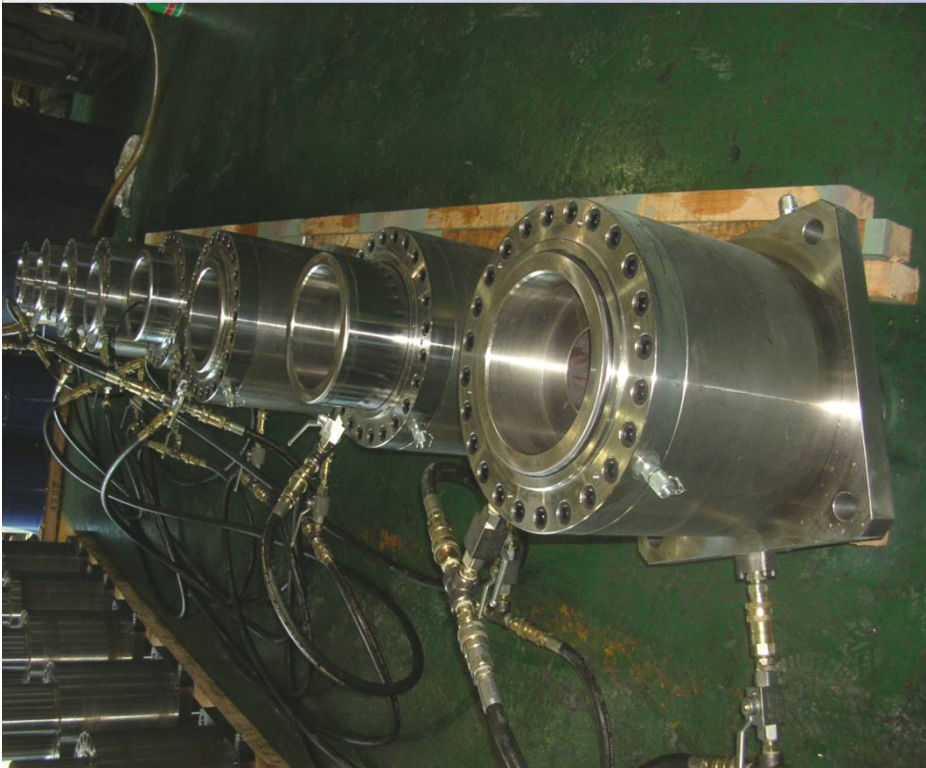




HYDRAULIC & PNEUMATIC CYLINDER

ESTABLISHED

1995 OCT. 1st



PLANT VIEW



BUSINESS BLDG.

FACTORY

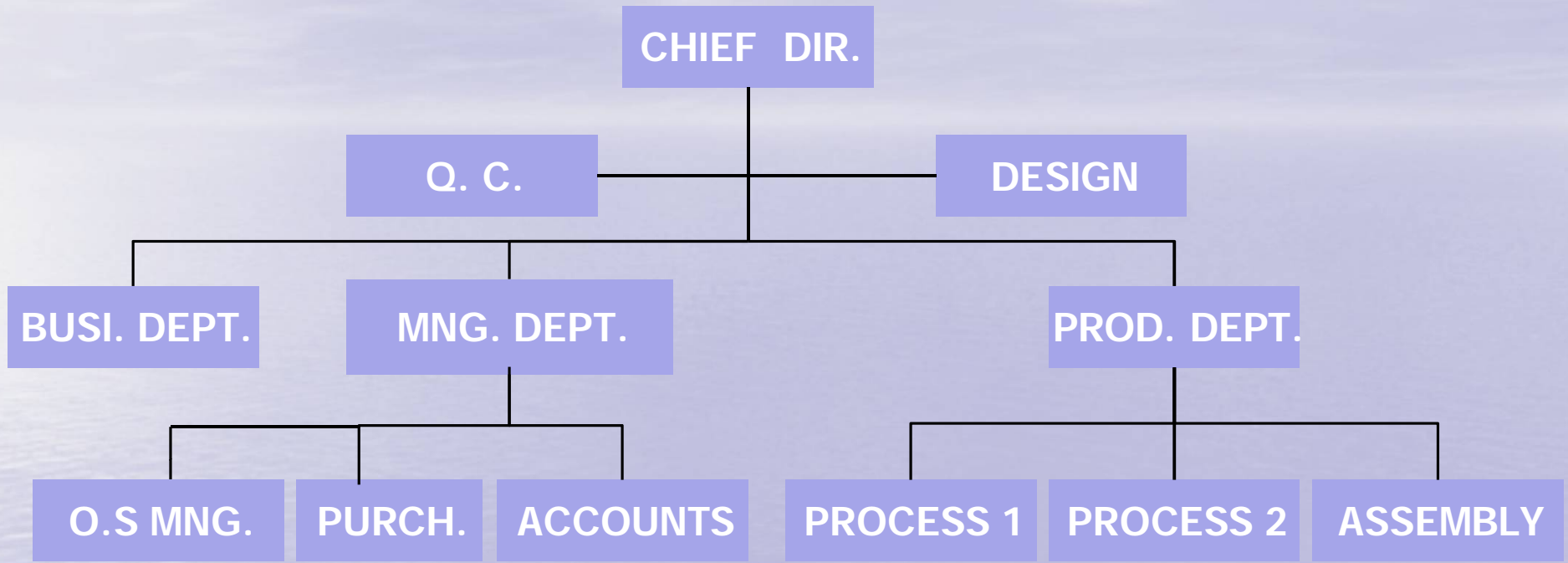
MACHINING SHOP



ASSEMBLY SHOP



ORGANIZATION



* TOTAL *

MNG.	PROD.
8	22

Certificate



Certificate of Registration

This is to certify that:
TAEIL CO., LTD.

#18, Yuh-ro 59beon-gil, Gimhae-si, Gyeongsang, Korea

Has been assessed by International Certification Registrar Ltd., in respect of their Quality Management Systems and found to comply with

ISO 9001:2008

Approval is hereby granted for registration providing the rules and conditions relating to certification are observed at all times.

Certification Scope

Design, Development, Manufacture of Industrial Machine, Hydraulic Machine, Shipbuilding Materials and Marine Decorative Goods Parts

Certificate Issue Date : 31st July 2015 Initial issued date : 31st July 2015
Expiration Date : 30th July 2018 Certificate No. : Q188515

The Seal of ICR Limited was here to affixed in the presence of:

Handwritten Signature
President



Certificate of Registration

품질경영시스템인증서 (주)태일

경남 김해시 유하로 59번길 18(유하동)

아이씨알인증원은 상기업체의 품질경영시스템이 아래의 인증규격에 적합함을 인증합니다

ISO 9001:2008

인증관련 규정을 항상 준수한다는 조건으로 등록승인을 부여합니다.
인증범위

산업기계, 유공압기기, 조선기자재 및 외장품에 대한 설계, 개발 및 제조

인증일자 : 31st July 2015 최초 인증일 : 31st July 2015
유효기간 : 30th July 2018 인증서 번호 : Q188515

The Seal of ICR Limited was here to affixed in the presence of:

Handwritten Signature
President



Certificate of Registration

This is to certify that:
TAEIL CO., LTD.

#18, Yuh-ro 59beon-gil, Gimhae-si, Gyeongsang, Korea

Has been assessed by International Certification Registrar Ltd., in respect of their Environmental Management Systems and found to comply with

ISO 14001:2004

Approval is hereby granted for registration providing the rules and conditions relating to certification are observed at all times.

Certification Scope

Design, Development, Manufacture of Industrial Machine, Hydraulic Machine, Shipbuilding Materials and Marine Decorative Goods Parts

Certificate Issue Date : 31st July 2015 Initial issued date : 31st July 2015
Expiration Date : 30th July 2018 Certificate No. : E094015

The Seal of ICR Limited was here to affixed in the presence of:

Handwritten Signature
President



Certificate of Registration

환경경영시스템인증서 (주)태일

경남 김해시 유하로 59번길 18(유하동)

아이씨알인증원은 상기업체의 환경경영시스템이 아래의 인증규격에 적합함을 인증합니다

ISO 14001:2004

인증관련 규정을 항상 준수한다는 조건으로 등록승인을 부여합니다.
인증범위

산업기계, 유공압기기, 조선기자재 및 외장품에 대한 설계, 개발 및 제조

인증일자 : 31st July 2015 최초 인증일 : 31st July 2015
유효기간 : 30th July 2018 인증서 번호 : E094015

The Seal of ICR Limited was here to affixed in the presence of:

Handwritten Signature
President



No. 2015/L3746

CERTIFICATE OF AUTHORIZATION

The Korea Industrial Technology Association, the certifying agency authorized by the Ministry of Science, ICT and Future Planning of the Republic of Korea, hereby certifies the

TAEIL R&D Center
of

TAEIL Co.,Ltd
located at

2F, 18, Yuh-ro 59beon-gil, Gimhae-si, Gyeongsangnam-do, Seoul, Korea

as an

Industrial R&D Center

as of 28th July 2015

pursuant to the Basic Research Promotion and Technology Development Support Act of the Republic of Korea.

Handwritten Signature

Jeonwan Kim, Ph.D
Executive Deputy Chairman
Korea Industrial Technology Association(KITA)

특허증

CERTIFICATE OF PATENT

특허 제 10-1298042 호

출원번호 Application Number 제 10-2012-0035310 호

출원일 Filing Date 2012년 04월 05일

출원일 Registration Date 2013년 08월 13일

발명의 명칭 Title of the Invention
면드셀에 권위된 스트림 코일의 인출장치

특허권자 Patente
주식회사 태일(195511-0*****)
경상남도 김해시 유하로59번길 18 (유하동)

발명자 Inventor
황드필(680207-1*****)
경남 김해시 금관대로599번길 11, 1004동 1703호 (무계동, 대동아파트)

위의 발명은 「특허법」에 따라 특허등록원부에 등록되었음을 증명합니다.
This is to certify that, in accordance with the Patent Act, a patent for the invention has been registered at the Korean Intellectual Property Office.



2015년 07월 27일

특허청장
COMMISSIONER
KOREAN INTELLECTUAL PROPERTY OFFICE

최동규

Certificate No. : 20150421410

Certificate of Venture Business

Company : TAEIL CO., Ltd.
Representative : Lee, Kyeong-Seok
Company Address : 18, YUH-RO 59BEON-GIL, GIMHAE-SI, GYEONGSANGNAM-DO, KOREA
Type of Venture : Technology-based Approved Company
Appraiser : Small Medium Business Corporation
Valid Date : Oct. 15, 2015 - Oct. 12, 2017

This is to certify that the above-mentioned company is Venture business in accordance with Article 25 of the Act on Special Measures for the Promotion of Venture Business.

Day Month Year
13 Oct. 2015

SBC President
Small & Medium Business Corporation
The Republic of Korea



No. 13712

Certificate for Specialized Materials and Components Enterprise

Company Name : TAEIL CO., Ltd
Representative : Lee, Kyeong-Seok
Location : 18, Yuh-ro 59beon-gil, Gimhae-si, Gyeongsangnam-do, Korea
Valid Date : Nov 23, 2015 ~ Nov 22, 2018

It is hereby certified that TAEIL CO., Ltd is a specialized enterprise for materials and components in accordance with Paragraph 2, Article 5-2 of the Act on Special Measures for the Promotion of Specialized Enterprises, etc. for Materials and Components, and Paragraph 2, Article 16 of the Enforcement Rule on the Act.

March 11, 2016

Minister of Trade, Industry & Energy

MAIN FACILITIES

TEST & MEASURING TOOL

NAME	SIZE	Q' TY	MAKER	TOOL	SIZE	Q' Ty	MAKER
LATHE	Φ1200 * 8000L	1	TAKISAWA	MICROMETER (OUTSIDE DIMENSION)	0 - 2000	16	MITUTOYO
				MICROMETER (INSIDE DIMENSION)	0 - 1500	1	MITUTOYO
LATHE	Φ900 * 6000L	1	HANKOOK MACHINE TOOLS CO. , LTD.	CYLINDER GAUGE	10 - 1000	7	MITUTOYO
LATHE	Φ750 * 4000L	1	HANKOOK MACHINE TOOLS CO. , LTD.	VERNIER CALIPERS	0 - 2000	10	MITUTOYO
				DIGITAL VERNIER CALIPERS	0 - 250	1	MITUTOYO
LATHE	Φ580 * 1500L	1	Hwacheon Mach.	DEPTH VERNIER CALIPERS	0 - 150	1	MITUTOYO
MILLING M/C	#5	1	DOOSAN Mach	DIAL TEST INDICATER	0 - 750 K	4	MITUTOYO
RADIAL M/C	DRD - 1500.2500	2	PAKA, BONGSHIN	DIAL INDICATER	0 - 100	2	MITUTOYO
				PRECISION SQUARE		1	MITUTOYO
TIG WELDER	WS-ADT (500S)	5	Taeshin	PITCH GAUGE	0.5P - 8.0P	2	MITUTOYO
CO2 & MAG WELDER	HIC - 500 S	10	Sangshin	ROUND GAUGE	R1 - R20	1	GERMANY
OVER HEAD CRAIN	50,20,10,5	5	Daeheung Industrial	PIN GAUGE	mm, inch	1	
Painting Tool		1	HASCO	SCREW GAUGE		1	
MACHINING CENTER	1000L * 1250L	1	KURAKI (Japan)	THICKNESS GAUGE		1	
				CENTER GAUGE		1	
CNC MILLING	#7	1	MAKINO(Japan)	V - BLOCK	BM1-103 - 0	1	JAPAN
HYD' CYL TEST(PORTABLE)	5 - 300 bar	1	TAEIL	HEIGHT GAUGE	0 - 500 mm	1	MITUTOYO
HYD' CYL TEST(WATER GLYCOL)	5 - 350 bar	1	TAEIL	HARDNESS TESTER	HLN - 11 A	1	TIME
HYD' CYL TEST	5 - 600 bar	1	TAEIL	HEIGHT GAUGE	0 - 1000	3	MITUTOYO
LOAD TEST JIG		1	TAEIL				

MAIN PRODUCT

- 1.HYD. CYLINDER for STEEL PLANT & INDUSTRIAL FACILITIES
- 2.AGC CYLINDER, FORGING PRESS CYLINDER, GUILLOTINE CYL. & SPECIAL CYL.
- 3.HYDRAULIC SYSTEM & TEST OPERATION

MAIN CLIENT

- 1.Pohang Iron & Steel Company(POSCO)
- 2.Hyundai Steel Plant (Hyundai Steel)
- 3.Dongkuk Steel Mill Company
- 4.Yunhap Steel Mfg. Company
- 5.Wasted Material Press Mfg. Compny - Japan

KEY SUPPLY RECORD - 1

KEY SUPPLY RECORD -2

YEAR/MONTH	RECORD	CUSTOMER	YEAR/MONTH	RECORD	CUSTOMER
2000. 04	HYD CYL (OA-0191) f or POSCO C.C. REPAIR SHOP CONSTRUCTION	POSCO/POSMEC			
2000. 10	HYD CYL (OA-0709) for POSCO #1 HOT ROLLED MILL COIL CONVEYOR	POSCO/POSMEC	2004. 11	HYD CYL for HOT DIP GALVANIZING LINE of SE-AH STEEL PLANT	Seahsteel
2000. 12	HYD CYL (OA-0191) for POSCO #1 HOT ROLLED MILL EXPANSION	POSCO/POSMEC		HYD CYL for LADLE TILTING EQUIPMENT of GWANGYANG #2 ST'L MILL	POSCO
2001. 07	PULLEY ASS'Y (1B-042) for GWANGYANG #2 CDQ FACILITIES	POSCO/POSMEC	2005. 02	TENSION REEL LINE HYD CYL. For #6 CGL PAY OFF REEL	POSCO/POSCO E&C
2001. 08	HYD CYL (2108-01) for POSCO COKES INPUT FACILITIES	POSCO		HYD CYL for EXIT WALKING BEAM CONVEYOR of GWANGYANG #6 CGL ENTRY	POSCO/POSCO E&C
2001. 12	HYD & AIR CYL (2S 1011) for POSCO C.C FACILITIES	POSCO/ROTEM	2005. 03	HYD CYL for COLD LEVELLER of #2 THICK Plate MILL	POSCO/POSMEC
2002. 04	HYD CYL SSP (24815)	POSCO	2005. 05	HYD CYL for JANGGA STAINLESS STEEL PLANT in CHINESE	POSCO E&C
2002. 08	HYD CYL for #4 CGL LINE of YUNHAB ST'L	YUNHAB ST'L/HYUNDAI H.I.	2005. 09	HYD CYL for GWANGYANG #1 COLD MILL PLANT	POSCO/HYUNDAI H.I.
2003. 07	HYD CYL SSP (49846)	POSCO		F.M HYD CYL for POSCO #2 HOT MILL	POSCO/HYUNDAI H.I.
2003. 11	CHINESE SUNSCAPE CCL LINE - HYD CYL	NEW NIPPON ST'L PLANT	2005. 10	HYD CYL for POSCO #2 HOT ELECTRIC STEEL MILL	POSCO/POSCO E&C
2003. 12	CHINESE SINO PROJECT CRM. CGL HYD CYL	KAWASAKI (JAPAN)	2005. 11	HYD CYL for COIL CONVEYOR CAR of POSCO #2 HOT ROLLED MILL	POSCO/POSCO E&C
	HYD CYL for CHINESE CHUNGDO STS CRM PROJECT	POSCO	2006. 01	HYD CYL for ZRM FACILITIES of ELECTRIC STEEL PLATE MILL	POSCO/POSMEC
2004. 03	CSU HYD CYL for DANGJIN THERMOELECTRIC POWER PLANT	KECO/DOOSAN H.I.	2006. 02	COLLAR COATING LINE COIL CAR HYD CYL	POSCO
	CSU HYDRAULIC FACILITIES for POHANG RAW MAT'L HANDLING FACILITIES	POSCO/DOOSAN H.I.	2006. 05	HYDRAULIC SYSTEM for POSCO #2 COKE CDQ FACILITIES	POSCO
2004. 05	HYD CYL (05-08-01) for GWANGYANG #2 FIRE FURNACE REPAIR	POSCO	2006. 06	PUSH UP HYD CYL for SKIN PASS MILL of POSCO #2 HOT ROLLED PLANT	POSCO
2004. 07	HYD CYL (4A-0351) for POSCO #2 STEEL MILL(LADLE TILTING EQUIPMENT)	POSCO/POSMEC	2006. 08	HYD CYL for POSCO #2 COLD ROLLED MILL(PCM,TCM)	POSCO/DOOSAN H.I.
	APL HYD CYL for POSCO NEW ELECTRIC STEEL MILL	POSCO	2006. 08	CYL for R.M FACILITIES of HYUNDAI STEEL B-HOT ROLLED LINE	HYUNDAI STEEL/ROTEM
2004. 09	#1 M/C CROSS TRANSFER CAR & TRACK (4A-0474) for POSCO #2 C.C	POSCO/POSMEC	2006. 09	CYL for WATER TREATMENT SIDE SHIFTER of POSCO #3 THICK PLATE MILL	POSCO/POSCO E&C
2004. 10	HYD CYL for TAIWAN CGL LOOPER & ROLL FRAME	POSCO E&C	2006. 09	PHOSPHATE TREATMENT FACILITY for GWANGYANG #4 CGL PLATING PLANT	POSCO/POSCO E&C
	HYD CYL for POSCO #2 C.C LINE RATIONALIZATION	POSCO E&C	2006. 09	MSS FABRICATING & INSTALLATION JOB of INC HUNBIG BRIDGE	HYUNDAI CONST. CO./V S L
			2006. 11	HYD CYL for SIDE SHIFTER of POSCO #3 THICK PLATE MILL	POSCO

MAIN SUPPLY RECORD - 3

KEY SUPPLY RECORD - 4

YEAR/MONTH	RECORD	CUSTOMER	YEAR/MONTH	RECORD	CUSTOMER
2006.11	PHSPHATE COATER for GWANGYANG #6CGL	POSCO			
2007.01	HYD CYL - 26EA/10TYPE	POSCO			
2007.02	SPM & LEVELLER for GWANGYANG #3 HOT ROLLED MILL RATIONALIZATION	POSCO	2007.10	HYD CYL for 5000ton PRESS of HYUNDAI FORGING SHOP	HYUNDAI FORGING G/H.B.E
	HYD CYL - 1EA	POSCO	2007.11	HYD CYL for 2500ton PRESS of PYUNGSAN METAL	PYUNGSAN METAL/H.B.E
2007.03	HYD CYL - 13EA/5Type	POSCO	2007.06-2007.12	HYD CYL - 16EA/\$TYPE	POSCO
	HYD CYL - 11EA/8Type	POSCO		HYD CYL - 23EA/7TYPE	POSCO
	HYD CYL - 7EA/3Type	POSCO	2008.02	HYD CYL for COKE OVEN of WAKAYAMA COKE PLANT NO1	SHINHANMAHINERY/U-YUNG PREC.
	HYD CYL - 16EA/5Type	POSCO	2008.02	HYD CYL - 18EA/6TYPE	POSCO
	HYD SYSTEM for #2 THICK PLATE HEATING FURNACE	POSCO/POSCO E&C	2008.02	HYD CYL for COLD LEVELLER of POSCO #3 THICK PLATE MILL	POSCO/KOR-YUKEN
	MA 1975 / K3H M - DC	POSCO/HYUNDAI H.I.	2008.02	27,000 TON PUSH PULL HYD CYL	SUNG DONG /PSC
2007.04	MA 1966 / CROP SHEAR of GWANGYANG #3 HOT ROLLED MILL	POSCO/HYUNDAI H.I.	2008.03	POT LIFT CYL for POSCO(MEXICO) CGL	POSCO/B.R.K
	HYD CYL - 18EA/5TYPE	POSCO	2008.03-11	SERVICE CAR CHANGE of GWANGYANG 1-4 COKES DOOR	POSCO/DALSUNG
	HYD CYL - 5EA/3TYPE	POSCO	2008.04	HYD CYL for POSCO(MEXICO) CGL CHECKING FACILITY	POSCO/Sehwamt ech
	HYD CYL - 13EA/6TYPE	POSCO	2008.05	HYD CYL for 5000ton PRESS IN ENGLAND	H.B.E
	HYD CYL - 5EA/2TYPE	POSCO		HYD CYL for GWANMGYANG MINI MILL CEM PROJECT	POSCO E&C
2007.05	HYD CYL - 14EA/6TYPE	POSCO	2008.08	HYD CYL for TOKYO SEWERAGE PROJECT	KOR-YUKEN
2007.05	HYD CYL for KY4C SCALE BREAKER	WIA/POSCO		HYD CYL for 2500ton PRESS of TAYO CO.	H.B.E
2007.05	HYD CYL for BILLET RECTIFICATION FACILITY	Seahbesteel /POSCO	2008.09	4-POLE GENTRY WELDER MACHINE for DOOSAN-VIETNAM PLANT CONSTRUCTION	M.P.S
2007.05	HYD CYL for GWANGYANG #2 STEEL MILL RAIL CAR	POSCO		HYD CYL for DONGKUK HOT ROLLED STEEL MILL	DONGKUK ST'L /HYUNDAI H.I.
				HYD CYL for DANGJIN BRIDGE ERECTION WORK	V.S.L KOREA
				HYD CYL for GWANGYANG MINI MILL CEM	POSCO/POSCO E&C
				HYD CYL for MOVING MACHINE of HYUNDAI STEEL PLANT	HYUNDAI ST'L/SIC

KEY SUPPLY RECORD - 5

KEY SUPPLY RECORD - 6

YEAR/MONTH	RECORD	CUSTOMER	YEAR/MONTH	RECORD	CUSTOMER
2009.02	HYD CYL for POSCO STEEL PLATE FURNACE	POSCO/KOR-YUKE N	2010.09	HYD CYL for KUMGANG #7 WORK SECTION JOB	SK CONST./SHINC HANGTECH
2009.02	WATER SEAL TROUGH&SCALE CARRY CONVMOR	POSCO E&C	2010.09	COAL FEEDING SYSTEM	HYUNDAI STEEL P LANT
2009.03	HYD CYL for POSCO THICK PLATE & FLAT BA R HEATING FURNACE	POSCO/KOR-YUKE N	2010.11	HYD CYL(4.0M) for KUMNAM DAM	DAEWOO CONST./ SHINCHANGTEC H
2009.04	SERVOMOTOR for YECHON #1/2 WATER PUMPING STATION	DOOSAN H. I./Win xen	2010.11	HYD CYL for DAMYANG FLOOD MANAGING WORK	DAEWOO CONST./ SHINCHANGTEC H
2009.05	HYD CYL for STAKER&RECLAIMER of GWANGYANG THICK PLATE	POSCO/KOR-YUKE N	2010.11	HYD CYL REPAIR(2.0M) for KUMNAM DAM	DAEWOO CONST./ SHINCHANGTEC H
2009.08	HYD CYL for GWANGYANG NEW STEEL MILL F ACILITY	POSCO/SINWOO I NDUS.	2010.09	HYDRAULIC WINCH for CHILGOK DAM GATE TURNING	DAEWOO CONST.I man tech
	RAIL CAR for GWANGYANG #3 STEEL MILL RH- VTD	POSCO/SAMWOO MACH.	2010.12	HYD CYL for SANGJOO DAM REVISION WORK of NAKDONG-RIVER 33 WORK-SECTION	HYUNDAI INDUS./S HINCHANGTECH
	AGC CYL for DONGKUK-DANGJIN STEEL PLANT	DONGKUK/ILJIN M ACH.	2011.09	EF ROLLING MILL ASS'Y LINE	DONGKUK/ILJ I NMACH.
2009.09	HYD PUMP & LUB UNIT for POSCO NEW THICK PLATE MILL	POSCO/KOR-YUKE N	2011.09	HYD CYL for SULFURIZING WORK of HANKUK TIRE	HANKUKTIRE /HANKUK OIL INSTITUTE
2009.10	AGC CYL for POSCO-SUNCHON MAGNESIUM PLANT	POSCO	2011.09	DUST TREATING SYS. For HYUNDAI STEEL CANNER Y	HYUNDAI ST'L/TAEIL MA CH.
2009.10	HYD CYL for SINGOLI #3 HYDRAULIC SYSTEM	DOOSAN H. I./PO WERM&C	2011.10	BOILER COIL TUBER SYSTEM BENDING AUTOMATIC LINE(AUTO SILO)	DOOSAN H.I.(I NDO)/MPS
2010.01	HYD CYL for KUMGANG ECOLOGY RIVER PROJECT	DAIWOO CONST./S HINCHANGTECH	2011.10	BOILER COIL TUBER SYSTEM BENDING AUTOMATIC LINE(PRE-PROCESS LINE)	DOOSAN H.I.(I NDO)/MPS
2010.02	CROSS TRANSFER EQUIPMENT for POSCO 2-2 C.C RATIONALIZATION	POSCO E&C	2011.11	BOILER COIL TUBER SYSTEM BENDING AUTOMATIC LINE(2-HEAD BENDER AUXILIARIES)	DOOSAN H.I.(I NDO)/MPS
2010.03	SIDE SHIFTER for GWANGYANG THICK PLATE MILL	POSCO E&C			
2010.04	HYD CYL for REVISION PROJECT of NAKDONG- RIVER 20 SECTION of WORK	SK CONST./SHINC HANGTECH	2011.12	HYD CYL for 4000ton FORGING PRESS	HYUNDAI ST'L/DONGSH INPRESS

KEY SUPPLY RECORD - 7

KEY SUPPLY RECORD - 8

YEAR/MONTH	RECORD	CUSTOMER	YEAR/MONTH	RECORD	CUSTOMER
2012.02	HYD CYL for SULFURIZING UNIT of HANKUK TIRE	HANKUKTIRE /HANKUK OIL INSTITUTE	2012.12	HYD CYL for 1000ton GUILLOTINE	EXPORT(JAPAN)
2012.02	POT LIFT PLATFORM for MEXICO NO2 CGL(EP))	POSCO CONST. /YUNGHAE	2013.01	HYD CYL for 1250ton GUILLOTINE	EXPORT(JAPAN)
2012.03	HYD CYL for 2500ton GUILLOTINE	EXPORT(JAPAN)	2013.02	HYD CYL for 1600ton GUILLOTINE	EXPORT(JAPAN)
2012.04	HYD CYL for COLD LEVELLER	POSCO/HANKUK OIL INSTITUTE	2013.04	HYD CYL for 1250ton GUILLOTINE	EXPORT(JAPAN)
2012.05	RT-BEARING BLOCK AND MITER BOX for POSCO INDONESIA STEEL PLANT	POSCO CONST.	2013.07	HYD CYL for 80ton & 1000ton GUILLOTINE	EXPORT(JAPAN)
2012.06	FURNACE MUFFLE CHANGING CAR for POSCO STS COLD ROLLING MILL	POSCO CONST.	2013.08	HYD CYL for GWANGYANG #4 HOT ROLLED MILL	HANKUKTIRE /HANKUK OIL INSTITUTE
2012.07	250 TON JACK REPAIR for SHWE PROJECT LOAD OUT	HYUNDAI H.I./GLORIA	2013.08	HYD CYL for BOHYUNSAN DAM PROJECT	POSCO CONST /YUNGHAE
2012.07	MILL EQUIPMENT for POSCO #4 WIRE MANUFACTURING MILL	POSCO CONST	2013.08	DC SERVO HYDRAULIC SYSTEM for GWANGYANG #4 HOT ROLLED MILL	POSCO/HANKUK OIL INSTITUTE
2012.07	HYD CYL FOR SEGMENT of POSCO #2 STS C.C MILL	POSCO CONST.	2013.08	HYD CYL for 2500ton GUILLOTINE	EXPORT(JAPAN)
2012.07	LADLE TURRET HYD CYL for GWANGYANG #4 HOT ROLLED MILL	POSCO CONST.	2013.09	HYD CYL for STEEL SCRAP PRESSING MACHINE	POSCO CONST.
2012.07	PINCH ROLL & LOOPER for POSCO #4 WIRE MANUFACTURING MILL	POSCO CONST.	2013.09	POSCO ROLL CYL	POSCO CONST.
2012.07	HYD CYL for 1250ton GUILLOTINE	EXPORT(JAPAN)	2013.10	HYD CYL for 1250ton GUILLOTINE	EXPORT(JAPAN)
2012.08	HYD CYL for SMALL ROLLING LINE	SEAH STEEL/UNEX	2013.11	JACK CYL	HYUNDAI H.I./GLORIA
2012.09	12SF02 GAS HOLDER STRUCTURE	POSCO CONST /SUNGJIN GOTECH	2013.12	HYD SYSTEM for POSHARP SEGMENT	POSCO CONST.
2012.09	HYD CYL for GWANGYANG #4 HOT ROLLED C.C MILL	POSCO CONST.			
2012.10	AGC CYL REPAIR for DONGKUK STEEL PLANT	DONGKUK ST'L/ILJ IN MACH.			

KEY SUPPLY RECORD - 9

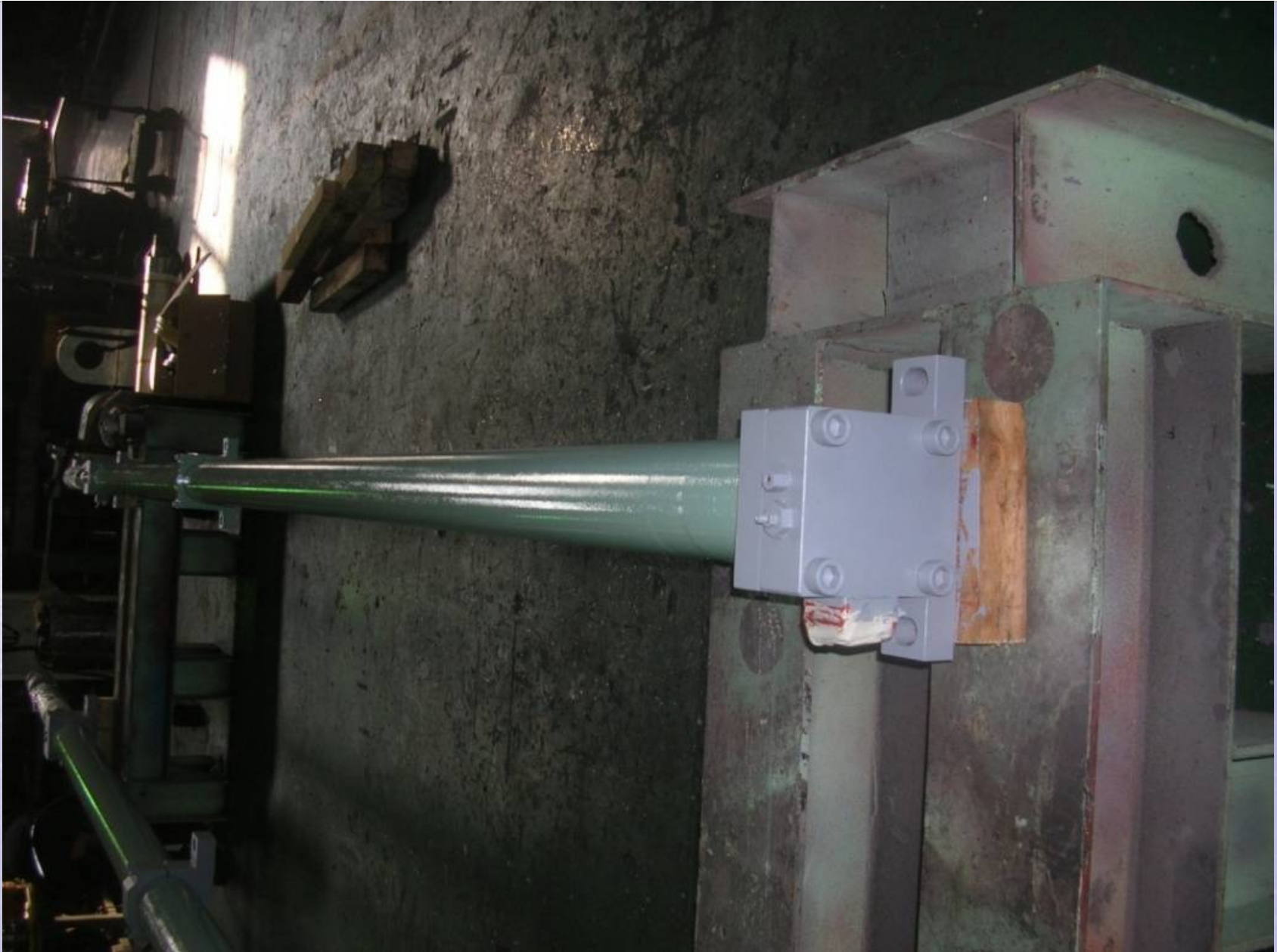
KEY SUPPLY RECORD - 10

YEAR/MONTH	RECORD	CUSTOMER	YEAR/MONTH	RECORD	CUSTOMER
2014.01	HYD CYL for SEGMENT of BRASIL STEEL PLANT	POSCO CONST.	2014.11	HYD CYL for COLD LEVELLER MAIN & CROWNING - TAIWAN CSC	SPCC/SSISCO
2014.01	SALT BATH for POSCO #1 STS ROLLING FACILITY RATIONALIZATION	POSCO CONST.	2014.12	CHOKE CYL for ROCK CRUSHING (SHINGPORE)	BUSUNG TECH
2014.01	BENDING BLOCK for ROLLING F1-3	POSCO CONST.	2014.12	HYD CYL for 35ton SCRAP PRESS	EXPORT(JAPAN)
2014.01	HYD CYL for 1250ton & 2000ton GUILLOTINE	EXPORT(JAPAN)	2015.01	POT LIFTING CYL for POSCO CGL LINE	POSCO/CISCO
2014.02	HYD CYL for SIPOOS WATER GATE	SEAH ST'L/UNEX	2015.01	HYD CYL for 1000ton GUILLOTINE & 50ton SCRAP PRESS	EXPORT(JAPAN)
2014.02	HYD CYL for 1250ton GUILLOTINE	EXPORT(JAPAN)	2015.02	CYLINDER REPAIR & REVISION - SEAH STEEL	HYUPSIN MACH.
2014.06	HYD CYL for 800ton SHEARING MACHINE	EXPORT(JAPAN)	2015.02	HYD CYL for 1000ton GUILLOINE & 25ton SCRAP PRESS	EXPORT(JAPAN)
2014.07	CHOKE CYL for ROCK CRUSHING(HONG KONG)	BUSUNG TECH.	2015.03	HYDRAULIC CYLINDER REPAIR & REVISION - HYUNDAI STEEL PLANT	HYUPSIN MACH.
2014.07	HYD CYL for 1000ton & 1250ton GUILLOTINE	EXPORT(JAPAN)	2015.04	SKIN PASS MILL CYL for POSCO-THAI CGL LINE	UNEX
2014.08	HYD CYL for 600ton & 1500ton GUILLOTINE	EXPORT(JAPAN)	2015.04	HYD CYL for 1000ton GUILLOTINE & 35ton SCRAP PRESS	EXPORT(JAPAN)
2014.09	SEGMENT LOCALIZATION for POSHARP	POSCO CONST. /SUNGJIN GOTECH	2015.06	HYD CYL for 1000ton GUILLOTINE & 30ton SCRAP PRESS	EXPORT(JAPAN)
2014.09	HYD CYL for 1250ton GUILLOTINE & 30ton SCRAP PRESS	EXPORT(JAPAN)	2015.07	HYD CYL for 1000ton GUILLOTINE & 35ton SCRAP PRESS	EXPORT(JAPAN)
2014.10	PUSH UP CYL for FUKUYAMA STEEL PLANT	SPCC/SSISCO	2015.08	HYD CYL for 1000ton GUILLOTINE & 35ton SCRAP PRESS	EXPORT(JAPAN)
2014.10	KPUSH UP CYL for KASHIMA STEEL PLANT	SPCC/SSISCO	2015.09	HYD CYL for 1000ton & 1250ton GUILLOTINE	EXPORT(JAPAN)
2014.10	HYD CYL for 1000ton GUILLOTINE & 50ton SCRAP PRESS	EXPORT(JAPAN)	2015.10	HYD CYL for 800ton & 1250 GUILLOTINE	EXPORT(JAPAN)
2014.11	SEGMENT LOCALIZATION for POSHARP	POSCO CONST.	2015.12	HYD CYL for 50ton SCRAP PRESS	EXPORT(JAPAN)
2014.11	HYD CYL for 1250ton GUILLOTINE	EXPORT(JAPAN)	2016.01	HYD CYL for 1250 GUILLOTINE	EXPORT(JAPAN)

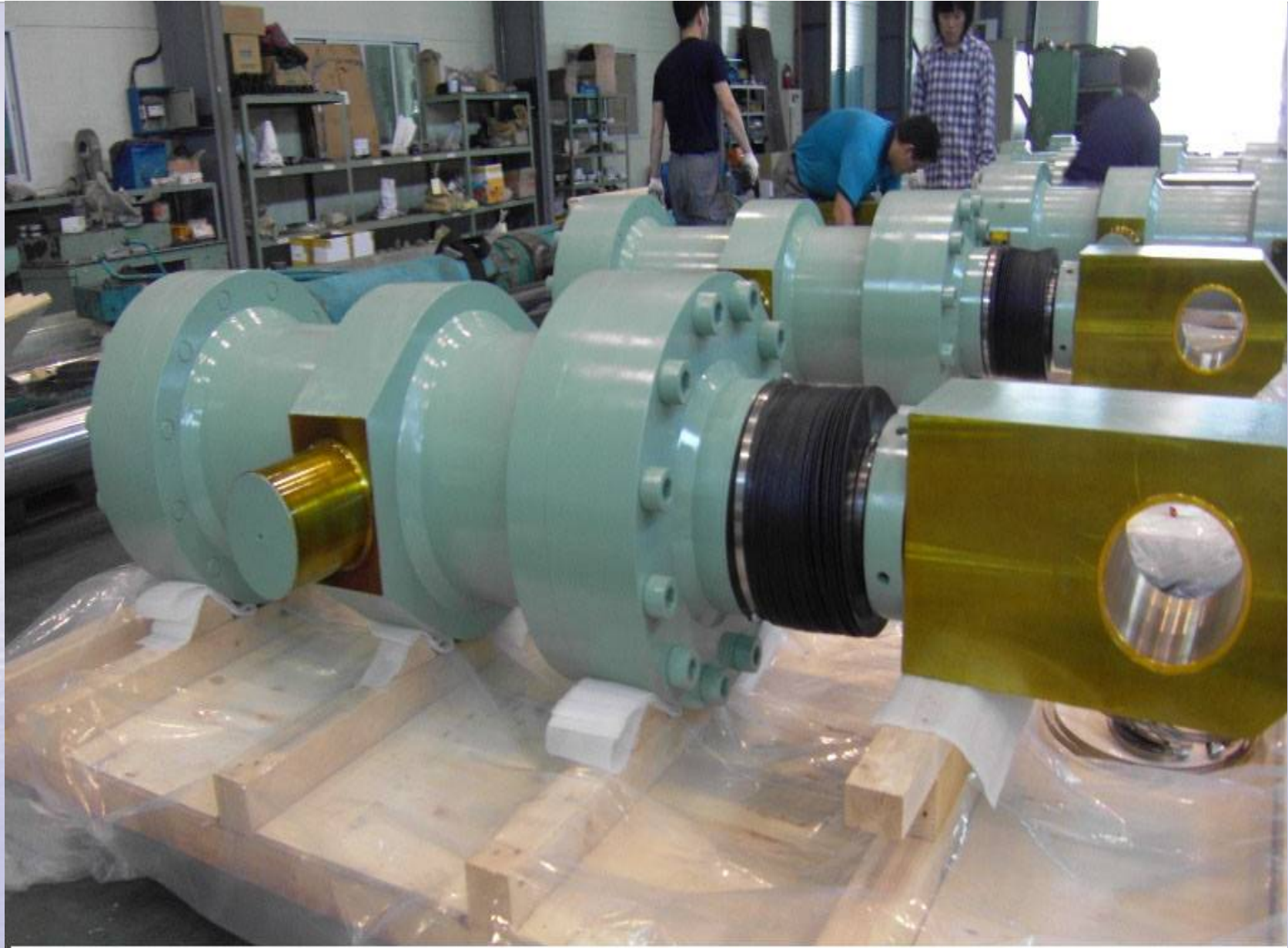
PRODUCT PICTURE



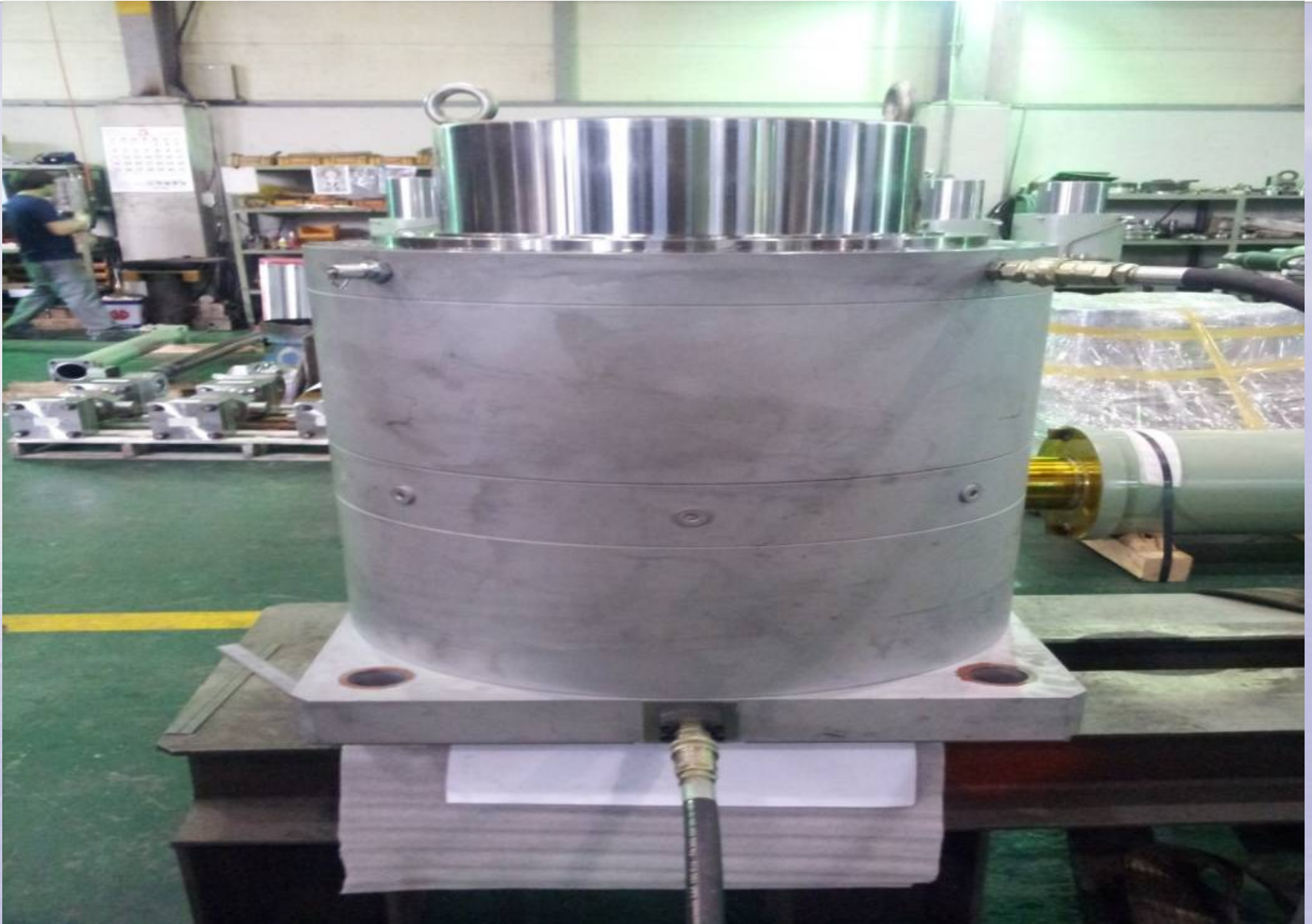
▷ HYD. CYL. STANDARD TYPE



▷ HYD. CYL. For STEEL PLANT (POSCO)



▷ HYD. CYL. For STEEL PLANT (POSCO)



▷ HYD. CYL. For STEEL PLANT (POSCO)



▷ HYD. CYL. For STEEL PLANT (POSCO)



▷ LADDLE LIFTING CYL. JIG TEST (POSCO)



▷ AGC CYL. (HYUNDAI STEEL PLANT)



▷ BALANCE CYL. (HYUNDAI STEEL PLANT)



▷ CSU BOOM HOISTING CYL. SCALE 1:5 TEST
(THERMOELECTRIC POWER PLANT)



▷ CSU BOOM HOISTING CYL. SCALE 1:5 TEST
(THERMOELECTRIC POWER PLANT)



▷ CSU BOOM HOISTING CYL. MAINTENANCE
(THERMOELECTRIC POWER PLANT)



▷ TELESCOPE 3 STEP CYL.



▷ **HYD. CYL. For FORGING MACHINE
(10,000TON PRESS)**



▷ HYD. CYL. For WASTE RECYCLING MACHINE
(JAPAN EXPORT)

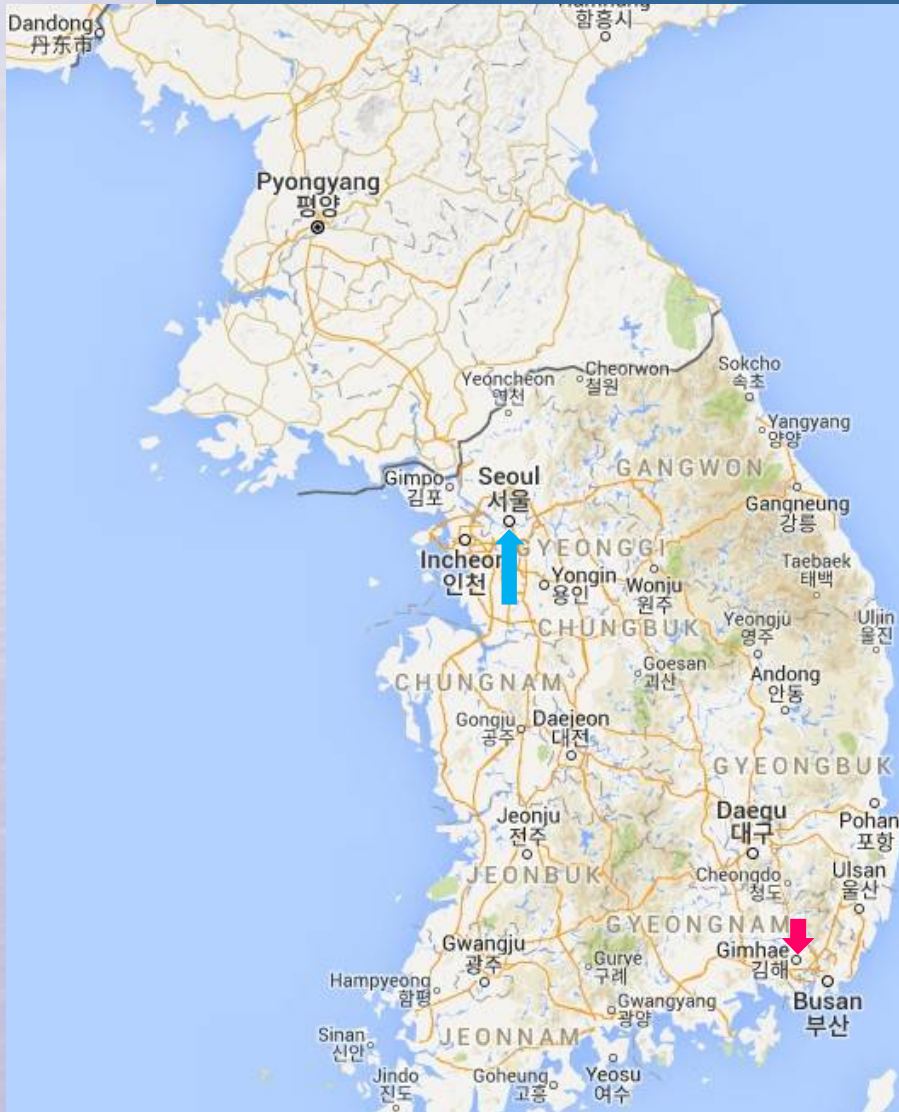


▷ **HYD. CYL. For WASTE RECYCLING MACHINE
(JAPAN EXPORT)**



▷ HYD. CYL. For CATAPULT MACHINE

TAEIL LOCATION(GIMHAE)



Add. : 18, Yuha-ro 59beon-gil, Gimhae-si

Gyeongsangnam-do, Korea

Tel. : 82-55-333-4166

Fax. : 82-55-333-4167

C.P : 82-10-9305-4166(Lee Kyeong-Seok)

or 82-10-3840-9105(Ha Dae-Sung)

E-mail : taeil4166@hanmail.net